

CENTRALIZED SECURITY FEATURE FOR SAFE MEDICINE MANAGEMENT

AlpVision
North American
Regional Office
Willis (Sears) Tower
233 S. Wacker Dr.
84th Floor,
Chicago, IL 60606
USA
T: 312 283 8260

www.alpvision.com

AlpVision SA
Rue du Clos 12
1800 Vevey
Switzerland
T: +4121 948 6464
F: +4121 948 6465
avinfo@alpvision.com

© 2011

AlpVision SA

1

8th Annual International Symposium on Safe Medicine for 2011

Portland, Maine, USA

Oct. 2 - 4, 2011

Quincy Mattingly
Regional Manager



Outline

- About AlpVision
- Track & Trace versus authentication
- Cryptoglyph® on-packaging protection
- Fingerprint™ on-dosage protection
- Local and remote authentication
- Centralized security feature management
- Conclusion

About AlpVision





- 🌐 2000: AlpVision starts
- 🌐 2001: AlpVision Sarl
- 🌐 2002: AlpVision SA
- 🌐 2003: Break-even
- 🌐 2004-2010: 20% average growth of turnover

AlpVision Today

Billions of products protected

Technology rolled out worldwide

Worldwide network

-  Customers
-  Printers
-  Integrators
-  Agents



Track & Trace versus authentication

Identification – Track & Trace

Track & Trace needs Identification via :

- Standardized numbering systems that can be exchanged universally using various forms such as:
visible serialization, barcodes, matrix codes


123456787801224



- **Cannot uncover which item is genuine and which is fake**, if the fraudulent replication is well done.

Authentication

Authentication via:
security features of various form such as:

 **Overt** features (visible)

Examples: micro text, hologram, inclusions

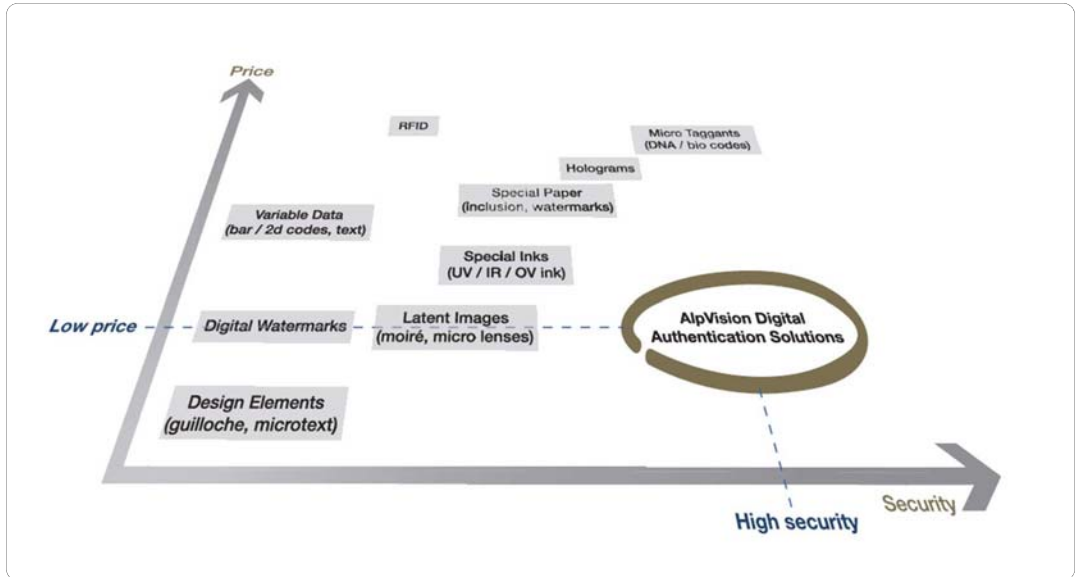


 **Covert** features (invisible to the naked eye)

Examples: UV/IR ink, Taggant (DNA, bio code)

AlpVision Digital Authentication Solutions

Levels of security of authentication features



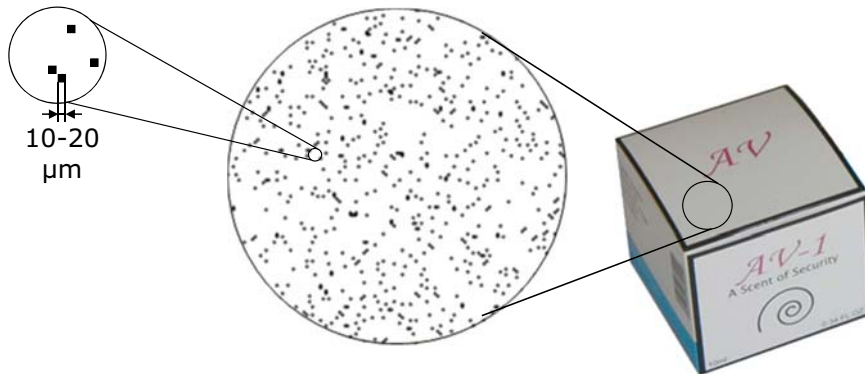


Cryptoglyph® on-packaging protection

Protecting
Labels, Packaging, Blisters and Leaflets

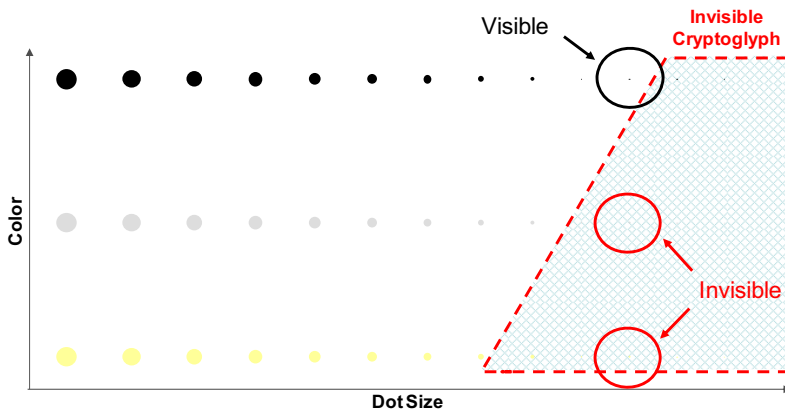
Cryptoglyph® Dots

The Cryptoglyph® is a pattern made by printed dots, invisible to naked eye.



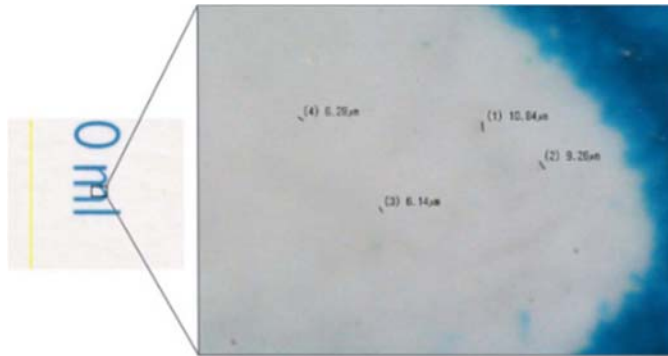
Why Invisible with Standard Visible Ink

Ordinary visible ink can be used to generate marking which is invisible to the naked eye.



Cryptoglyph®: Offset

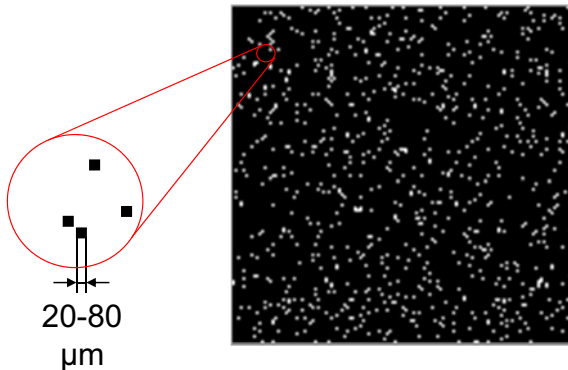
2400 dpi offset printing



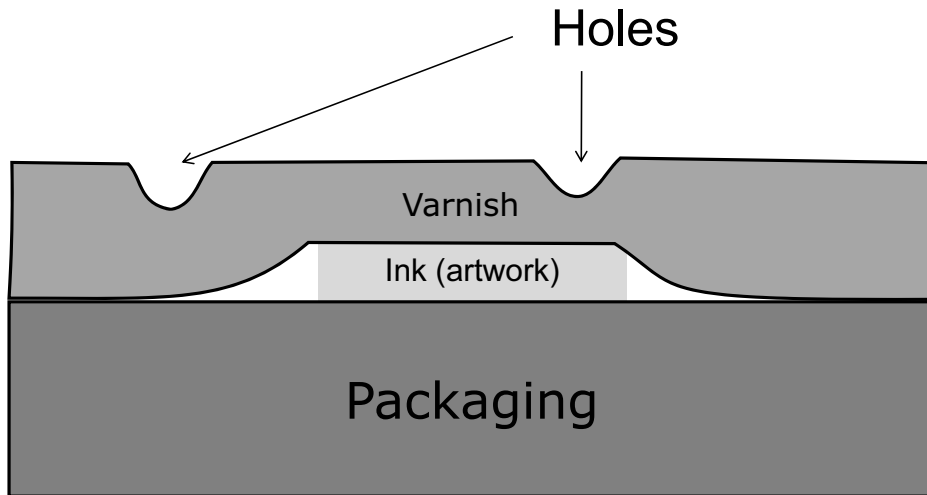
Camouflaged within the imperfections
of the printed material!

Cryptoglyph®: Varnish

The Cryptoglyph is a pattern made by holes in varnish, which are invisible to the naked eye.



Holes in the varnish layer



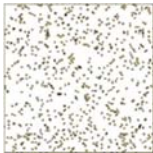
Cryptoglyph®: Flexography and Rotogravure

“Holes” in the varnish layer, flexo / roto



Camouflaged within the natural imperfections of the varnish layer.

Cryptoglyph® Production



Cryptoglyph
generation



Cryptoglyph
integration



Plate or
cylinder
production



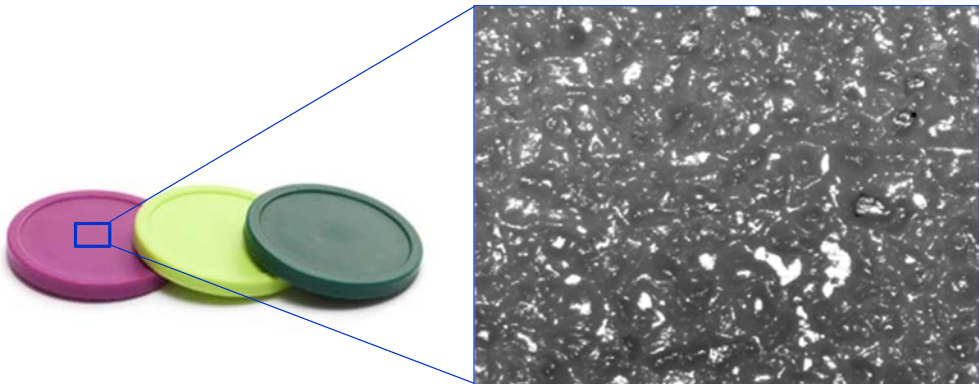
Print
production



Fingerprint™ On-dosage protection

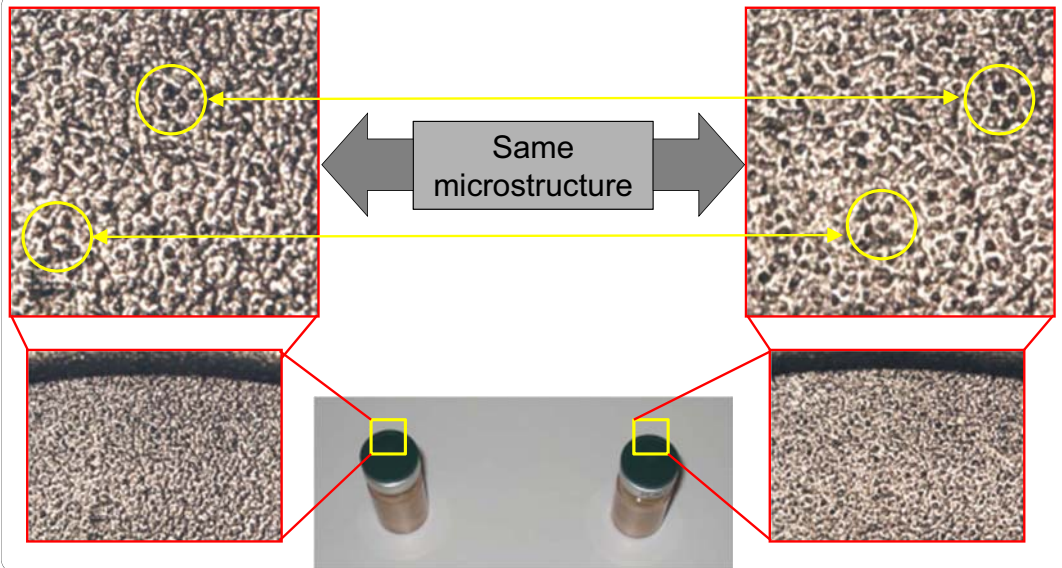
Vial closures, flip-off tops, bottle closures, other solid
and plastic molded parts

Example of flip-off tops



These flip-off tops already have an anti-counterfeit feature.
Let's use it.

Close-ups of flip-off tops produced by the same mold cavity



Local and remote authentication

Local Authentication / Verification

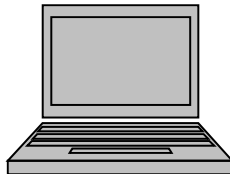
①

**Image captured
with a standard
scanner**



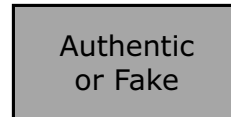
②

**Analysis on
PC**

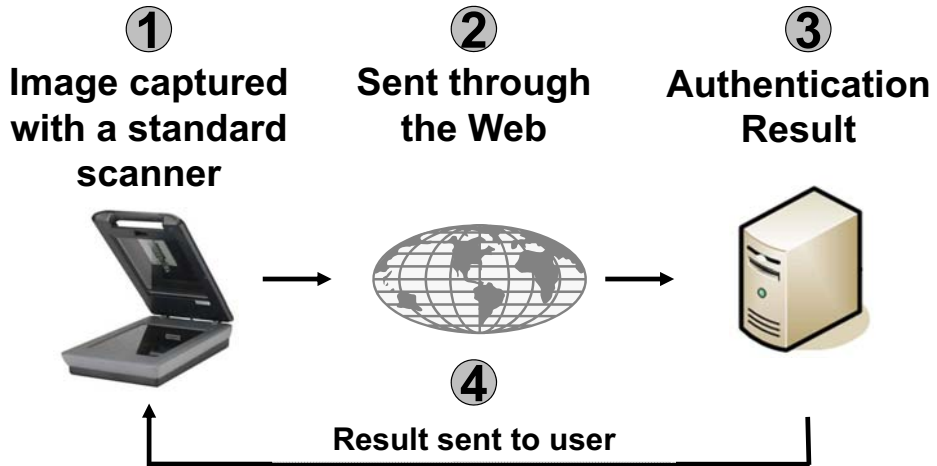


③

**Authentication
Result**



Remote Authentication / Verification



Authentication Devices

Standard Devices:

Regular Office Scanners

Digital Cameras

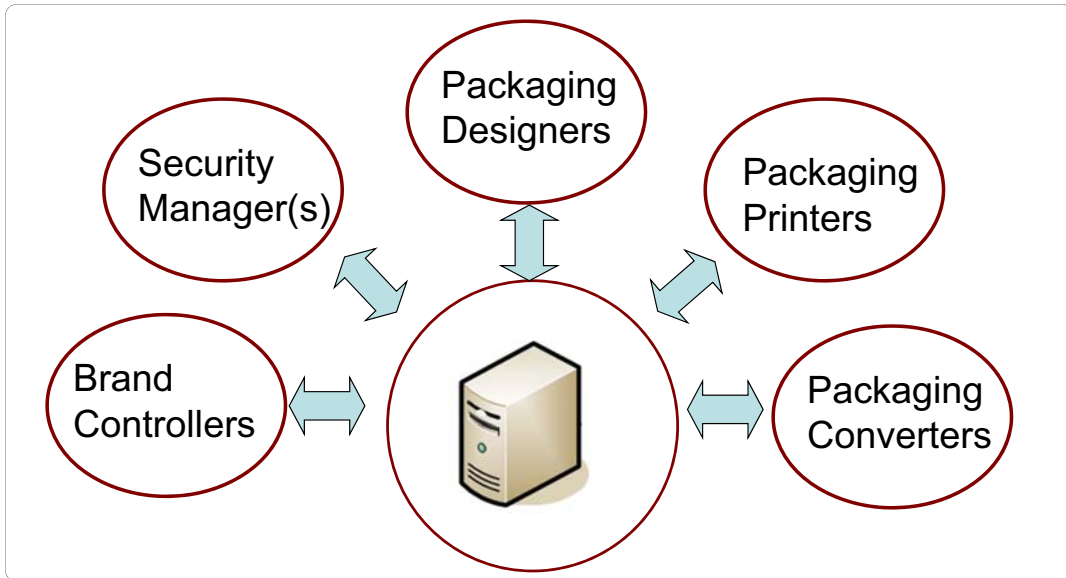


Industrial High-Speed Scanners

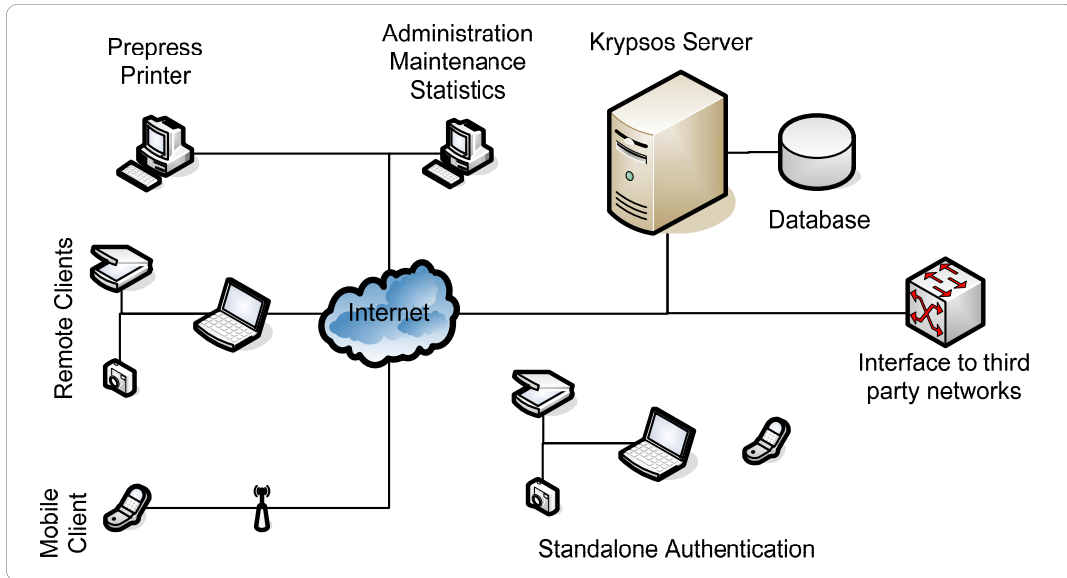


Centralized security feature management

System users



Krypsos™: Overview

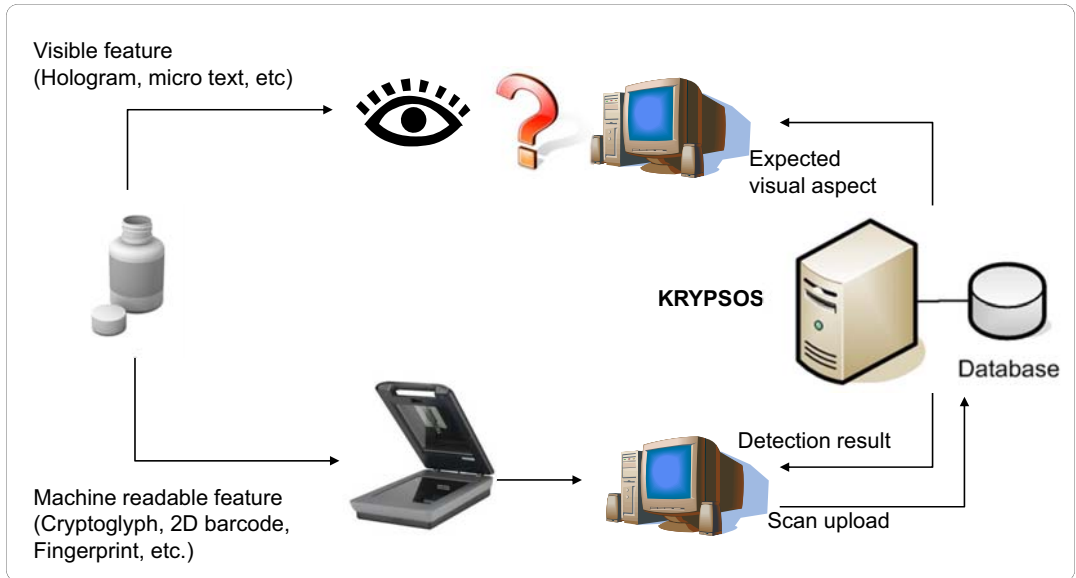


Krypsos™ Interface

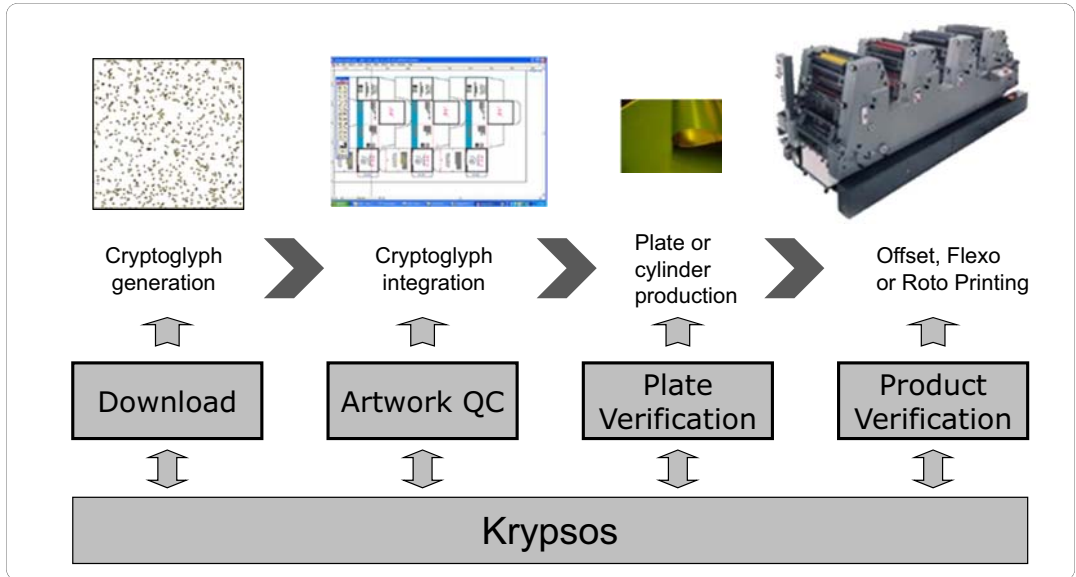


- Immediate worldwide access
- Access with regular browser: IE, Firefox, Chrome, Safari, ...
- Secured access with roles and permissions
- Multi language support

Krypsos™ : Verification Examples



Krypsos: Packaging Protection Example



Conclusion

- Anti-Counterfeiting program using web based centralized server provides:
 - Immediate worldwide access
 - Management of security features
 - Management of security feature deployment
 - Quality Control
 - Guided authentication with instant answers
 - Global statistics
 - Adaptable to local strategies, policies, and processes
 - Compliant with the GAMP 5 validation guidelines

Contact Information

AlpVision SA

Rue du Clos 12
1800 Vevey
Switzerland

www.alpvision.com
avinfo@alpvision.com
Phone: +41 21 948 64 64
Fax: +41 21 948 64 65

North American Regional Office

Willis (Sears) Tower
233 S. Wacker Dr., 84th Floor
Chicago, IL 60606, USA

www.alpvision.com
avinfo@alpvision.com
Phone: +1 312 283 8260
Fax: +1 312 283 8261

Thank you for your attention